

Please use the form below to help specify Sight Glasses

Enquiry Date _____

Media _____

Customer Name _____

*For HF we recommend FEP lined glass

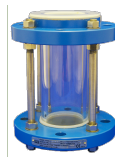
Email _____

Maximum Temperature _____ °C

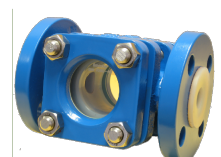
Minimum Temperature _____ °C

Maximum Pressure _____ bar(g)

Sight Glass Type Tubular



Bullseye



Note: Bulls Eye sight glasses are only available with PFA lined ductile iron bodies

Flange size (NB / DN) _____

Flange Class ASME 150 DIN PN10 DIN PN16

Other _____

Flange Material Carbon Steel

Stainless Steel Grade 304L 316L

Other _____

Lining Material Unlined Virgin PFA Anti-static PFA

Certification EN10204 Type 2.2 EN10204 Type 3.1

Extras Earth Studs FEP Lined Glass

Other _____

Other Remarks _____

