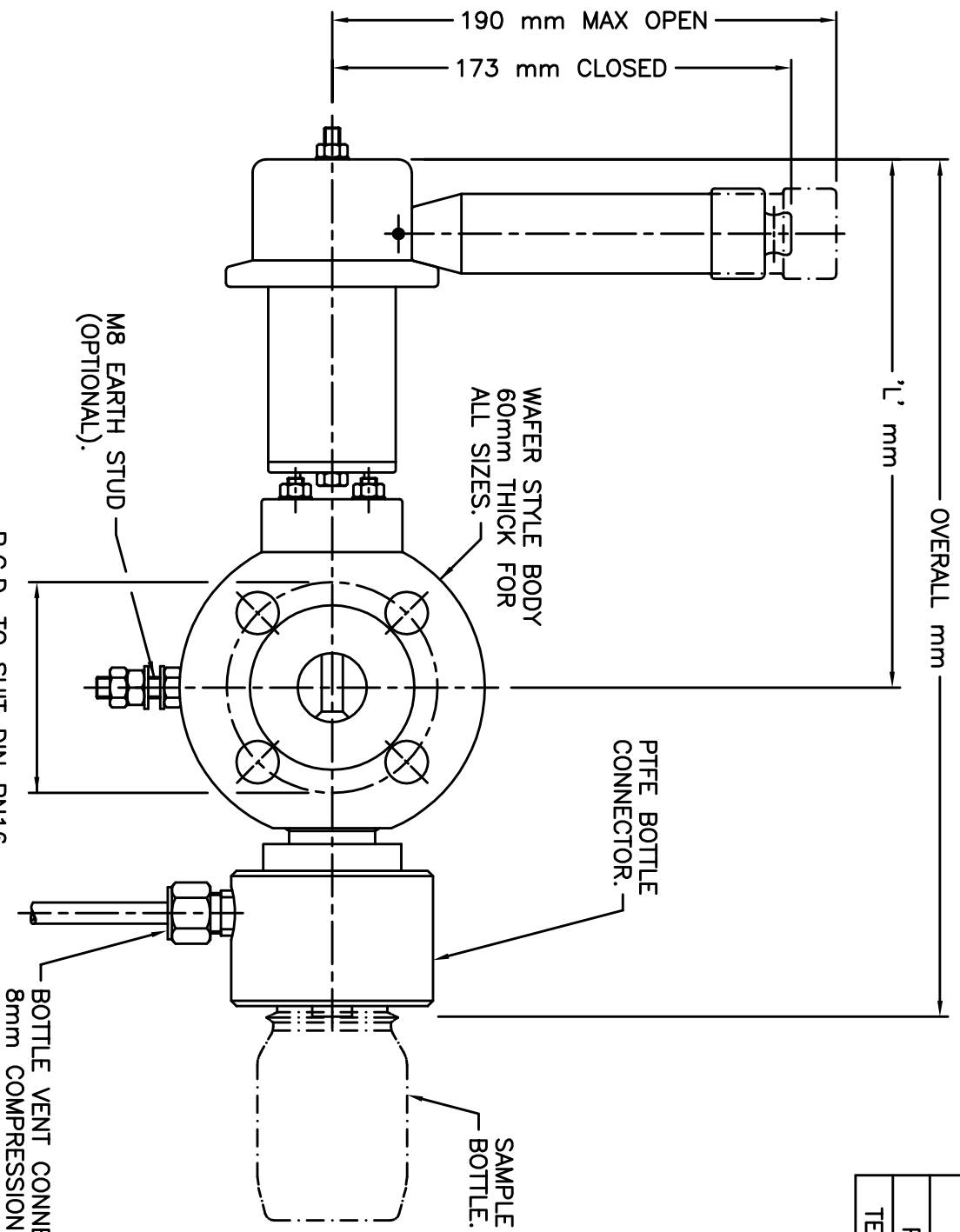
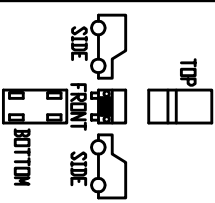


OPERATING DATA	VALVE TYPE	
	SD-IL-300	SD-IL-400
	316L St/St	PFA LINED
PRESSURE	16 bar Max	10 bar Max
TEMPERATURE	-29 to +200°C	-29 to +180°C

NOTE:  
 1/2" NB VALVE ONLY  
 AVAILABLE AS UNLINED  
 (SD-IL-300) VARIANT



VALVE SIZE	'L' mm	OVERALL mm
6" ASME 150lb	288 mm	497 mm
4" ASME 150lb	259 mm	442 mm
3" ASME 150lb	244 mm	412 mm
2 1/2" ASME 150lb	237 mm	397 mm
2" ASME 150lb	226 mm	374 mm
1 1/2" ASME 150lb	218 mm	360 mm
1" ASME 150lb	200 mm	323 mm
3/4" ASME 150lb	200 mm	321 mm
1/2" ASME 150lb	195 mm	318 mm



THIS DRAWING IS DRAWN USING THIRD ANGLE PROJECTION

REV	CHANGE	SIG	DATE
03	INFORMATION TABLE CHANGED	AT	5.10.21
02	TEMPERATURE RANGE	PTB	19.9.20

**crp** the corrosion expert  
 CRP Todmorden Road Littleborough OL15 9EG  
 www.crp.co.uk  
 Tel: +44(0)1706 756400 Fax: +44(0)1706 379567

PROJECTION	DRAWN	DATE
	JTB	04/2/08
DRG. PRACTICE TO B.S.308 DIMENSIONS IN mm U.O.S. UNSPECIFIED TOL. ±3	APP'D	04/2/08
	SCALE	NTS
		A3

TITLE:	PART NO:	DRG.NO:	REV.
G.A. SD-IL-300/400 ACTUATED SAMPLING DEVICE WITH BOTTLE ADAPTOR		SDD368	03