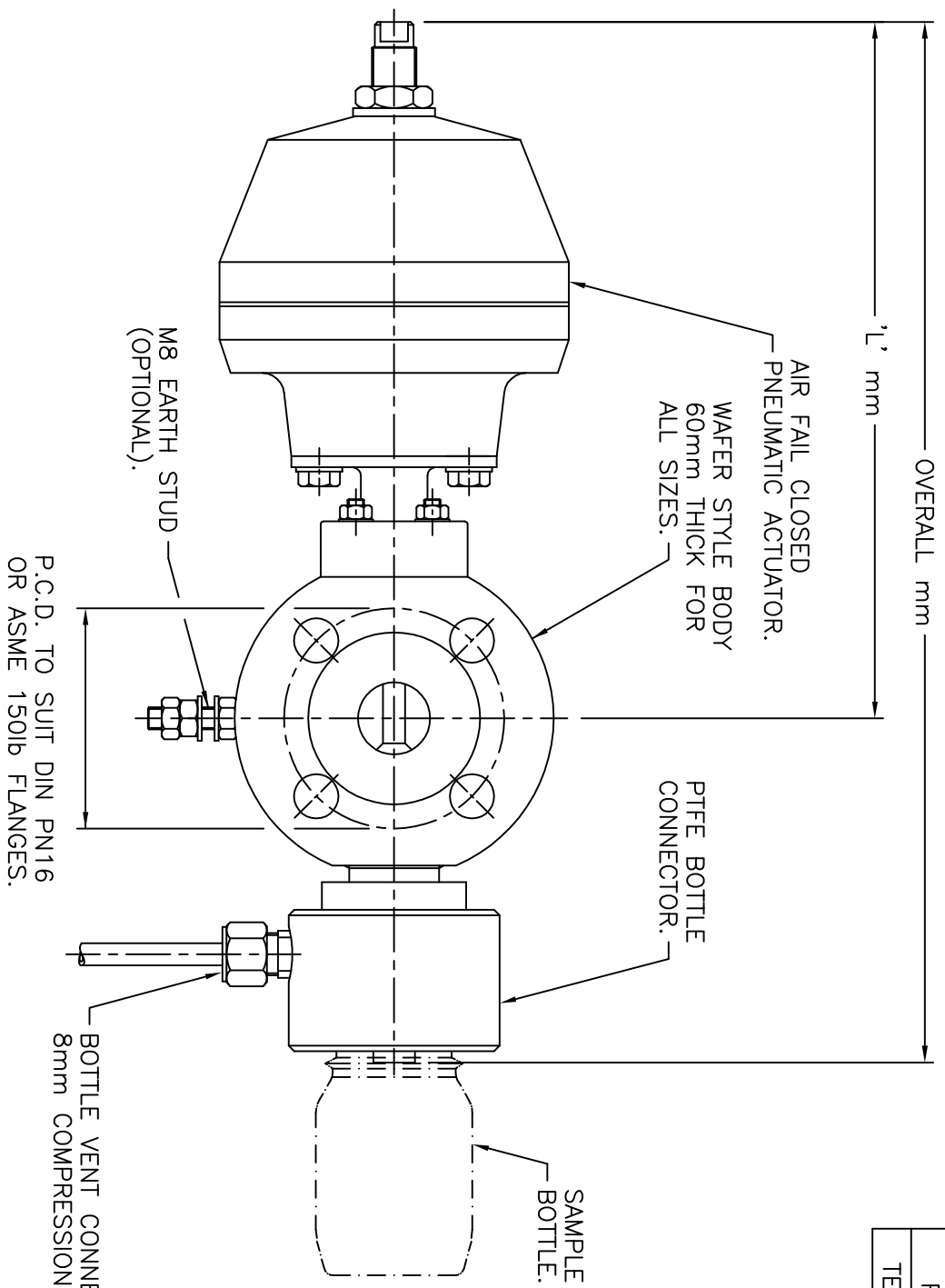
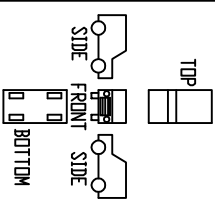


OPERATING DATA	VALVE TYPE	
	SD-IL-300	SD-IL-400
	316L St/St	PFA LINED
PRESSURE	16 bar Max	10 bar Max
TEMPERATURE	-29 to +200°C	-29 to +180°C

NOTE:
 1/2" NB VALVE ONLY
 AVAILABLE AS UNLINED
 (SD-IL-300) VARIANT



6" ASME 150lb	340 mm	549 mm
4" ASME 150lb	311 mm	494 mm
3" ASME 150lb	296 mm	464 mm
2½" ASME 150lb	289 mm	449 mm
2" ASME 150lb	278 mm	426 mm
1½" ASME 150lb	270 mm	412 mm
1" ASME 150lb	251 mm	375 mm
½" ASME 150lb	247 mm	369 mm
VALVE SIZE	'L' mm	OVERALL mm



THIS DRAWING IS DRAWN USING THIRD ANGLE PROJECTION

01	TEMPERATURE RANGE	PTB	19.9.20
REV	CHANGE	SIG	DATE

crp the corrosion expert
 CRP Todmorden Road Littleborough OL15 9EG
 www.crp.co.uk
 Tel: +44(0)1706 756400 Fax: +44(0)1706 379567

PROJECTION	
DRG. PRACTICE TO B.S.308 DIMENSIONS IN mm U.O.S. UNSPECIFIED TOL. ±3	
DRAWN	<i>TJB</i> 04/02/08
APP'D	04/02/08
SCALE	NTS
	A3

TITLE: G.A. SD-IL-300/400 ACTUATED SAMPLING DEVICE WITH BOTTLE ADAPTOR
 PART NO:
 DRG.NO: SDD373

REV.	01
------	----